

GYPB Antibody (Center)
Affinity Purified Rabbit Polyclonal Antibody (Pab)
Catalog # AP13698c**Specification**

GYPB Antibody (Center) - Product Information

Application	IHC-P, WB,E
Primary Accession	P06028
Other Accession	NP_002091.3
Reactivity	Human
Host	Rabbit
Clonality	Polyclonal
Isotype	Rabbit IgG
Antigen Region	22-51

GYPB Antibody (Center) - Additional Information**Gene ID** 2994**Other Names**

Glycophorin-B, PAS-3, SS-active sialoglycoprotein, Sialoglycoprotein delta, CD235b, GYPB, GPB

Target/Specificity

This GYPB antibody is generated from rabbits immunized with a KLH conjugated synthetic peptide between 22-51 amino acids from the Central region of human GYPB.

Dilution

IHC-P~~1:10~50

WB~~1:1000

E~~Use at an assay dependent concentration.

Format

Purified polyclonal antibody supplied in PBS with 0.09% (W/V) sodium azide. This antibody is purified through a protein A column, followed by peptide affinity purification.

Storage

Maintain refrigerated at 2-8°C for up to 2 weeks. For long term storage store at -20°C in small aliquots to prevent freeze-thaw cycles.

Precautions

GYPB Antibody (Center) is for research use only and not for use in diagnostic or therapeutic procedures.

GYPB Antibody (Center) - Protein Information**Name** GYPB ([HGNC:4703](#))**Synonyms** GPB

Function Component of the ankyrin-1 complex, a multiprotein complex involved in the stability and shape of the erythrocyte membrane.

Cellular Location

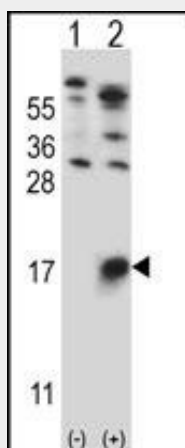
Cell membrane; Single-pass type I membrane protein

GYPB Antibody (Center) - Protocols

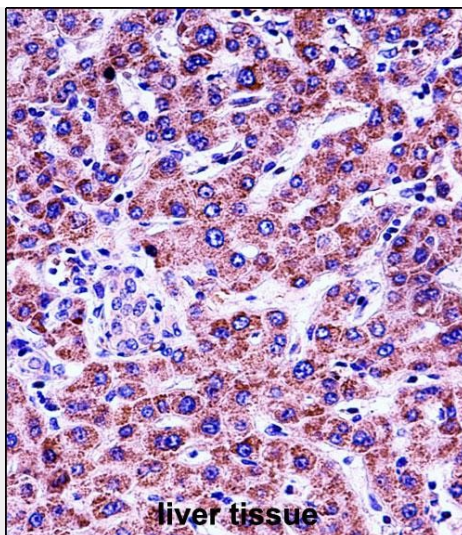
Provided below are standard protocols that you may find useful for product applications.

- [Western Blot](#)
- [Blocking Peptides](#)
- [Dot Blot](#)
- [Immunohistochemistry](#)
- [Immunofluorescence](#)
- [Immunoprecipitation](#)
- [Flow Cytometry](#)
- [Cell Culture](#)

GYPB Antibody (Center) - Images



Western blot analysis of GYPB (arrow) using rabbit polyclonal GYPB Antibody (Center) (Cat. #AP13698c). 293 cell lysates (2 ug/lane) either nontransfected (Lane 1) or transiently transfected (Lane 2) with the GYPB gene.



GYPB Antibody (Center) (Cat. #AP13698c) immunohistochemistry analysis in formalin fixed and paraffin embedded human liver tissue followed by peroxidase conjugation of the secondary antibody and DAB staining. This data demonstrates the use of GYPB Antibody (Center) for immunohistochemistry. Clinical relevance has not been evaluated.

GYPB Antibody (Center) - Background

This protein is a minor sialoglycoprotein in erythrocyte membranes.